

*A fresh visual approach to the compulsions of contemporary trends, have brought in to play colour contrasts and geometry at the .....*

## **Sri Lanka Institute of Information Technology at Malabe**

**Archt. Suchith Mohotti**  
**Suchith Mohotti Associates**



The increased interest in Computer Technology education created the need for an organized educational environment to develop software technologies for the future. Thus, several IT centres were established in and around Colombo. The state recognized the potential of this development and a large area of underdeveloped land in Malabe in the suburbs of Colombo was allocated by the Urban Development Authority for the development of an IT village visualizing it as a Silicone valley of Sri Lanka.

One of the campuses identified for development was the Sri Lanka Institute of Information Technology (SLIIT) a semi-government organization to provide IT training for a large number of students who would not be able to afford tuition fees for private sector IT education.

*Exterior views of the campus*





4



- 4. A streak of chrome yellow articulates the mezzanine, stairs and dining area.
- 5. Master bedroom terrace: a tracery of white against the tension of opposing colours.
- 6. A secluded inner street leading to the bedroom.
- 7. A progression of colours and textures from the entrance towards the rear garden.

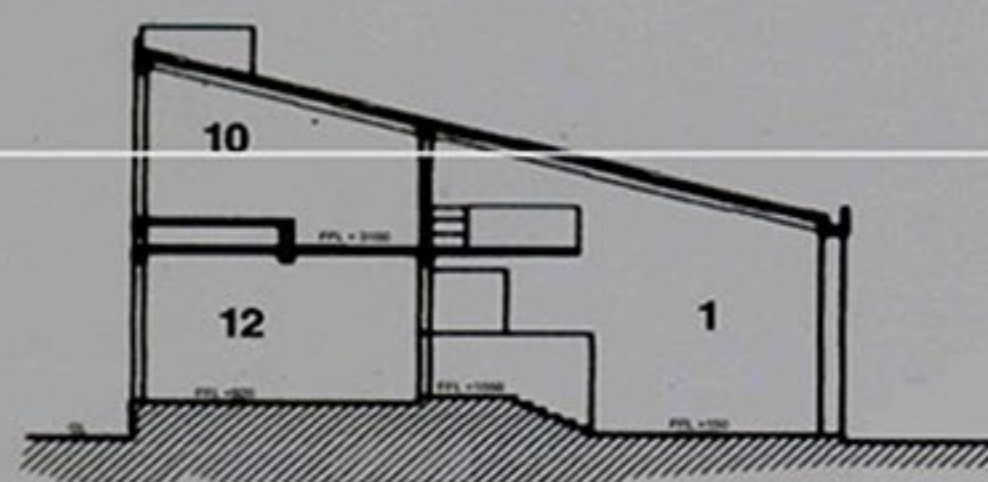


6

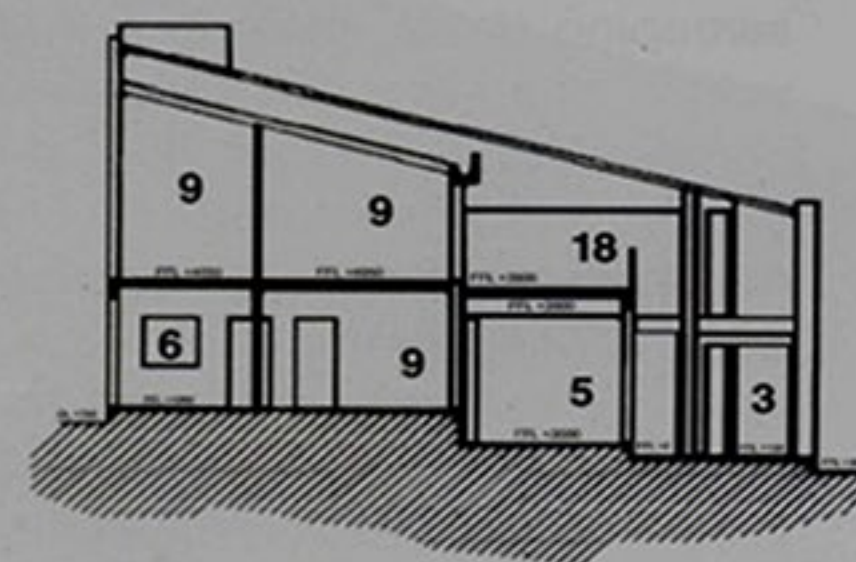
light well in the living

The entry through the living area is articulated with their black gloss facades culminating in the staircase which is accessed through an uncluttered timber space with cheery red. The deconstructed form of the loggia is utilized as a casual dining area. From the garden outside, the loggia as a beige-magenta space overlooking the sea green exterior.

Articulating the floor's more or less plan, the upper floor sleeping quarters for the family, is the orange predominantly mauve



Section XX



Section YY



Elevation to the marsh

- 1. Living
- 2. Dining
- 3. Verandah
- 4. Office Computer Room
- 5. Pantry
- 6. Kitchen
- 7. Store
- 8. Court Yard / Lightwell
- 9. Bed Room
- 10. Master Bed Room
- 11. Dressing Room
- 12. Garage
- 13. Washing
- 14. Servants Room
- 15. Driver's Room
- 16. Toilet
- 17. Terrace
- 18. Mezzanine
- 19. Loggia

Review  
Ravin Gunaratne

Suresh Shah House,  
Jayawadanagama  
Architect  
Suchith Mohotti  
Photographs  
Wanura Gomis

This interesting house which combines a spontaneous and enigmatic use of colour with rationally fleshed out spaces, gives a new dimension to the concept of "a livable space."

Suresh Mohotti draws the limits of endurance, towards the inspiration from the "annihilating edge" of the generation of art. For the future-conditioned colour palette, he counts on the building's history. He has undoubtedly seen the work of Matisse, Kandinsky, and other modernists. To be guided by a spectral light, then, is to belong to a maverick group that has turned its back on the fact, exuberantly. Thus it is, that each successive generation rediscovers for itself the richly etched motifs.

His architectural style has been pursued through design in a mannered approach to the use of colour. "Everyday rules of harmony" are dispensed with in the process. And if a rule can be made invalid, you arrive at a new equilibrium. From the new situation you do not remain indifferent to the world. Instead, everyone else is already standing. This is not to be taken for granted. Mohotti's work exemplifies this thinking.

His colour sequences and juxtapositions challenge and define. Thus, the visual stress caused by deconstructed spaces and elements imposing on one another, is diffused through the use of colour. Each function is an analogue. Half the form of experience that he creates lies in the process. The house itself is situated in a coastal area, overlooking the sea. The house is a play of light and shadow, of water and sky, of the humid and the dry. The house is a play of light and shadow, of water and sky, of the humid and the dry.

REHASHING RAINBOWS

Upper Floor



- 1. The blue end of the spectrum - clustered volumes of space transform facades in to sculptures. (preceeding page)
- 2. Leavened by the day light streaming through the glass curtain-wall of the living room, colours assume a jewel-like clarity.
- 3. Counterpoising the icy blue walls, the orange of the loggia defines the entry vestibule.